

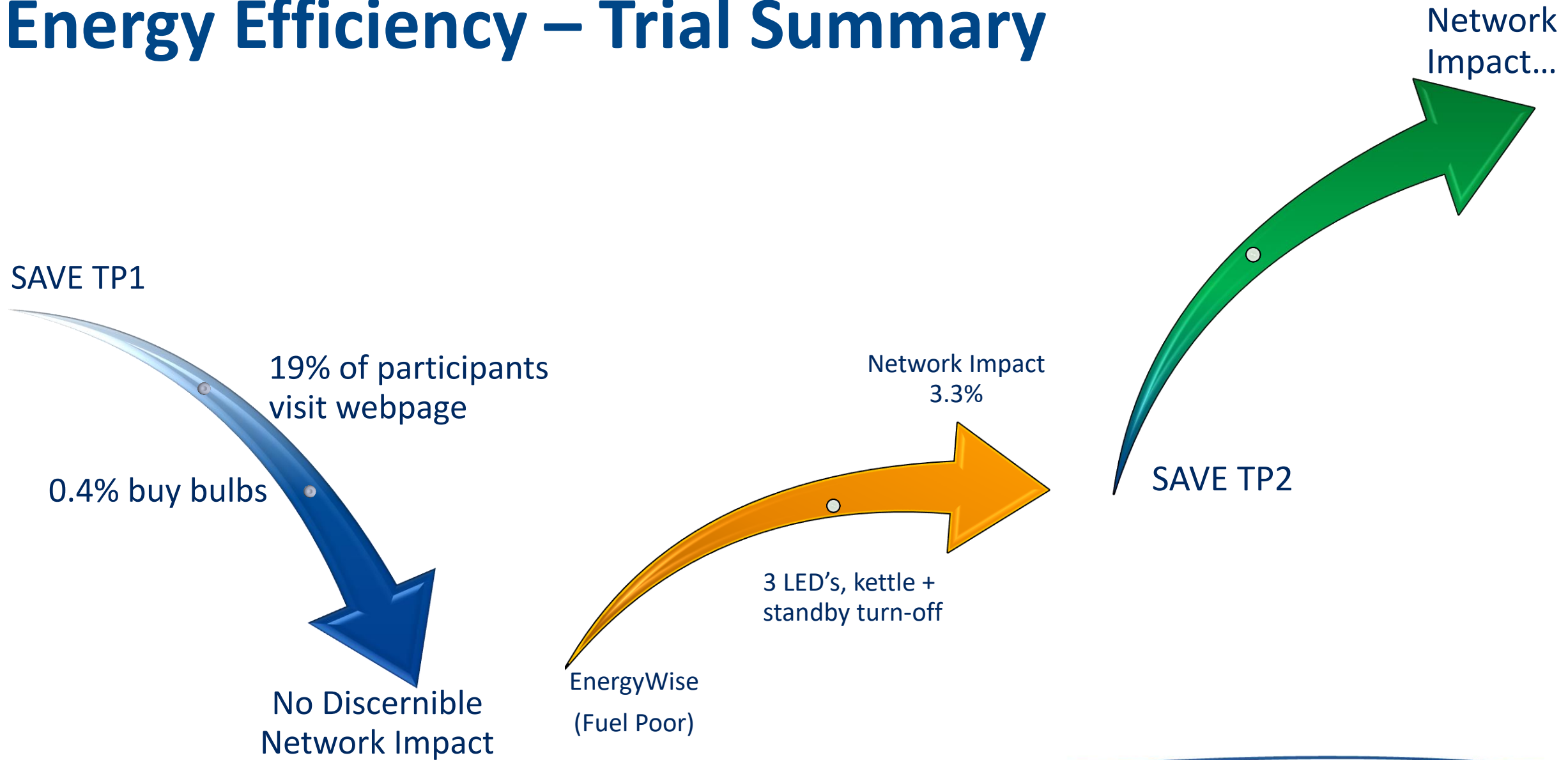
# SAVE project

June 2019



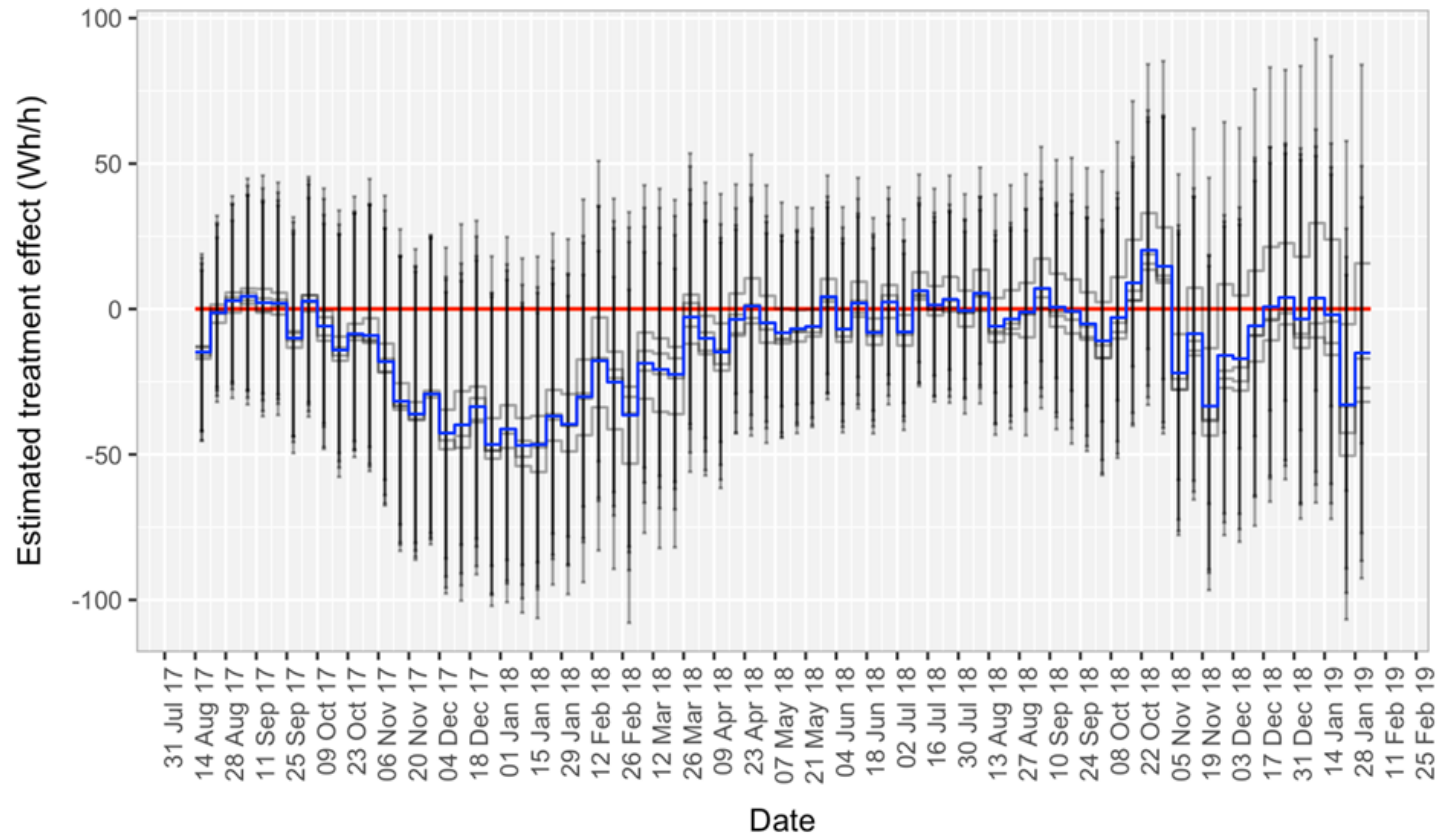
**Scottish & Southern**  
Electricity Networks

# Energy Efficiency – Trial Summary



# LEDs

## DNO led rollout



Error bars: 90% confidence interval for the estimates  
Grey lines indicate effect estimates by contrast week, blue line shows mean of estimates

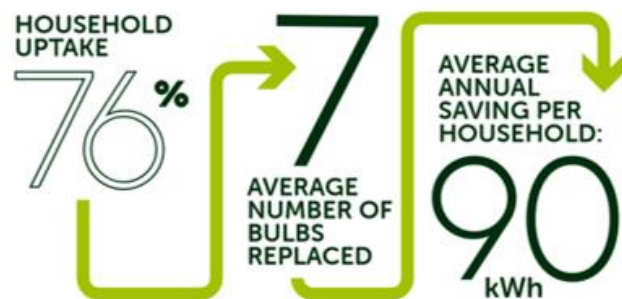
### Engagement Approach

- Targeted mailers
- Door-to-door engagement
- Site survey
- Contractor install and recycle of old bulbs
- Surveys recorded

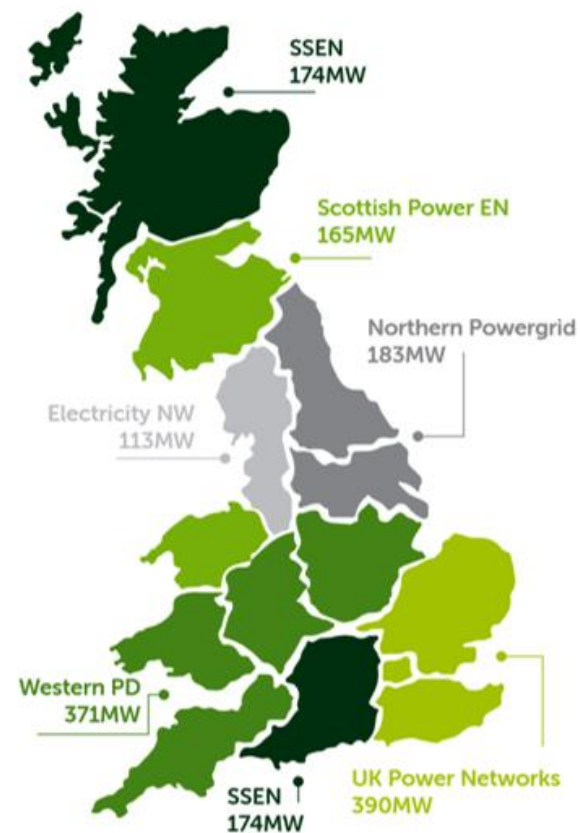


# Key Findings

## ANNUAL EFFECT SIZE ACROSS VARIOUS METRICS



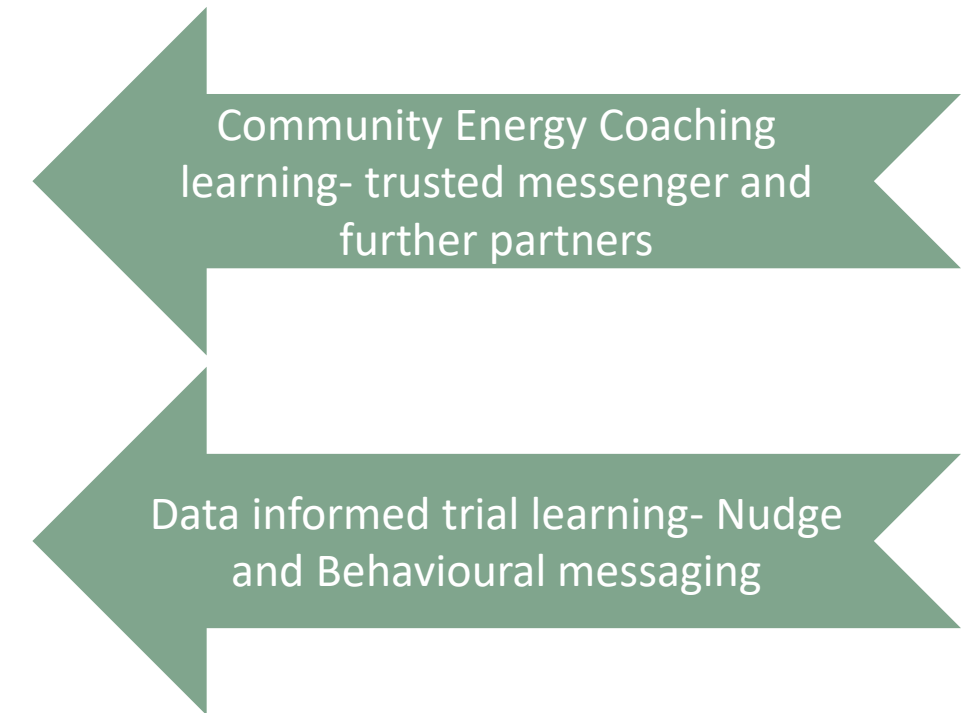
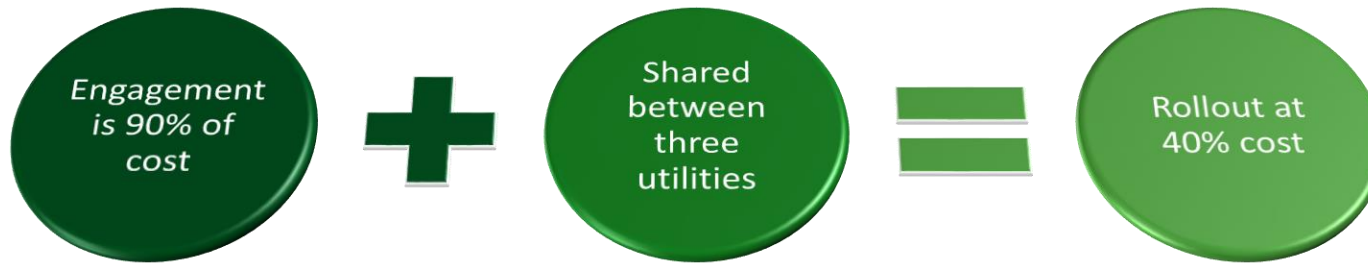
## POTENTIAL PEAK LOAD REDUCTION



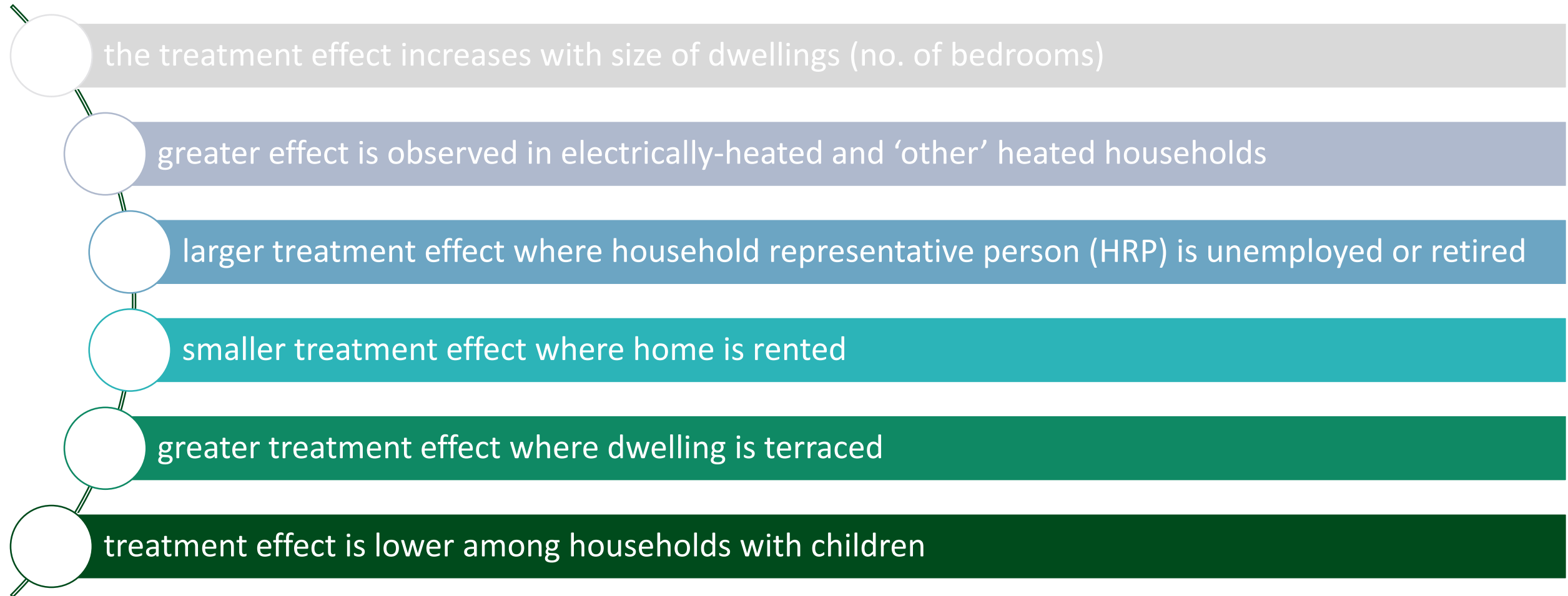
## VULNERABLE CUSTOMERS



# A business case for energy efficiency



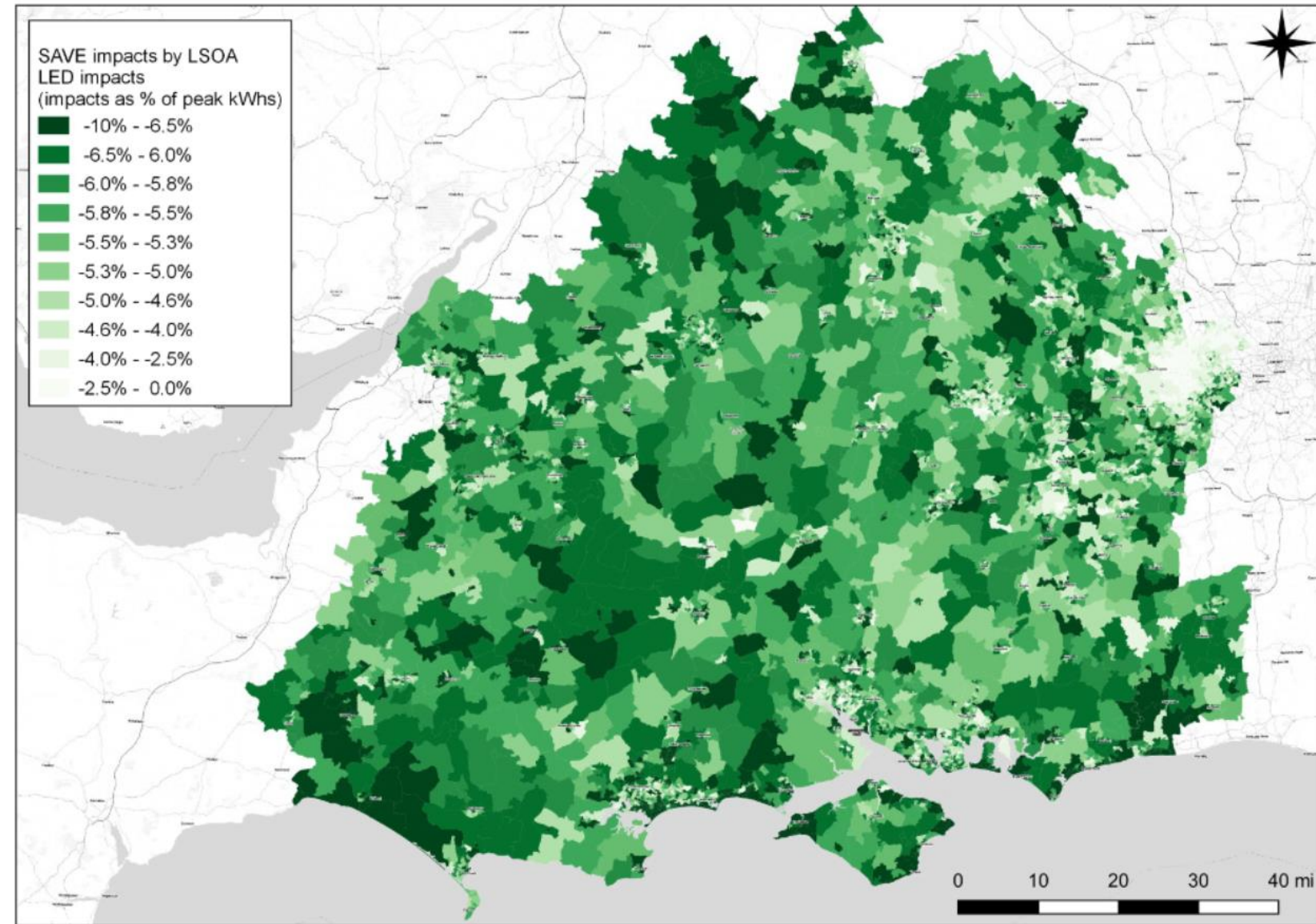
# Customer Model Outputs





# Impact across SSEN

- Impact of size of dwelling apparent
- Cities tend to show a lower percentage reduction
- Layer data with other information to target rollout strategies





**Scottish & Southern**  
Electricity Networks